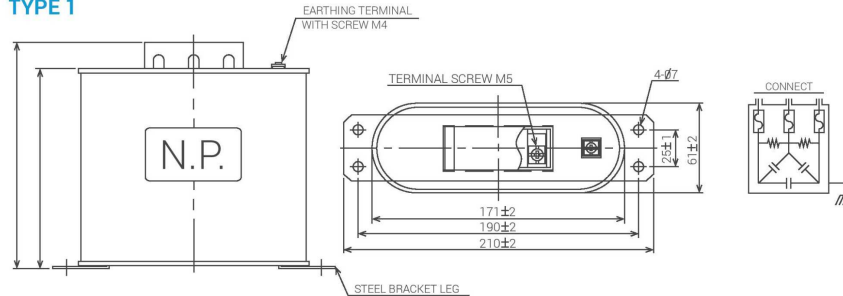
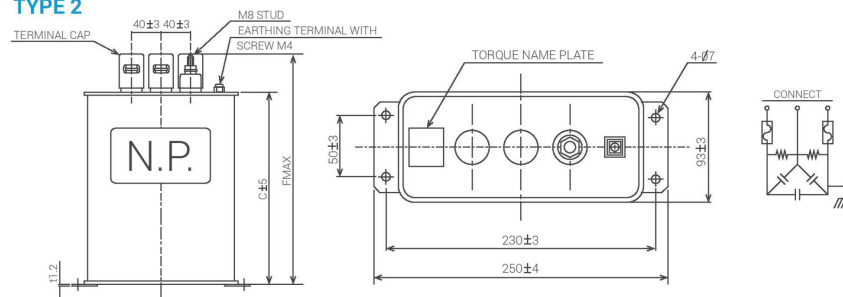


### TYPE 1



### TYPE 2



### RATING & DIMENSIONS (mm.)

NO.	CODE NO.	RATED			DIMENSION (mm.)		GROSS MASS	TYPE
		VOLTAGE	CAP	CURRENT	C	F		
1	RFT41550C1EX	415 V	5 kvar	6.95A	150	170	1.4 kg.	1
2	RFT41575C1EX		7.5 kvar	10.43A	150	170	1.4 kg.	
3	RFT41510D1EX		10 kvar	13.91A	150	170	1.4 kg.	
4	RFT41513D1EX		12.5 kvar	17.39A	210	230	2.0 kg.	
5	RFT41515D1EX		15 kvar	20.86A	210	230	2.0 kg.	
6	RFT41520D1EX		20 kvar	27.82A	250	270	2.4 kg.	2
7	RFT41525D1EX		25 kvar	34.78A	250	270	2.4 kg.	
8	RFT41530D1EX		30 kvar	41.70A	240	290	6.0 kg.	
9	RFT41540D1EX		40 kvar	55.60A	300	350	7.0 kg.	
10	RFT41550D1EX		50 kvar	69.90A	350	400	8.0 kg.	

## LOW VOLTAGE POWER CAPACITOR

- Pressure sensitive interrupter safety device
- Rated Voltage : 415V
- Rated output in Kvar : 5 ~ 50 Kvar

## APPLIED STANDARD

All capacitors are designed, manufactured and tested to meet the requirements of IEC 60831-1; 2

## OPERATING CONDITIONS

Installation : Indoor  
 Ambient temperature : -25°C to +45°C  
 Altitude : Not exceeding 2000 meters above sea level

## TYPE AND RATINGS

1. Type : RF-T
2. Rated voltage : see the table shown on page 4
3. Rated output in kvar : see the table shown on page 4
4. Rated frequency : 50 Hz
5. Phase and connection : Three (3) phase and delta



## DESIGN AND CONSTRUCTION

1. The capacitor containers is coated with non-corrosive poly-urethane resin enamel in Munsell colour notation 5Y7/1 for extended maintenance free service life.
2. The capacitors are normally designed to suit for mounting in vertical position with protective cover terminals on top.
3. Capacitor type RF-3T are manufactured with specially processed metallized polypropylene film impregnated with wax, within a tin plate casing and hermetically sealed.

## ELECTRICAL CHARACTERISTICS

1. **Discharge device :** The capacitors are provided with an internal discharge resistor which will reduce the residual voltage from the peak value to 75 volts or less within a maximum time of 3 minutes after they are disconnected from the source of supply.

## SAFETY FEATURES

**Capacitance (Output) :** within +10% and -5%

**Dielectric loss :** shall be 0.2 watt/kvar (discharge resistors included)

**Maximum permissible overloads/current :** not exceeding 1.3 times of the rated current

**Maximum permissible overloads/voltage :** shown on below chart

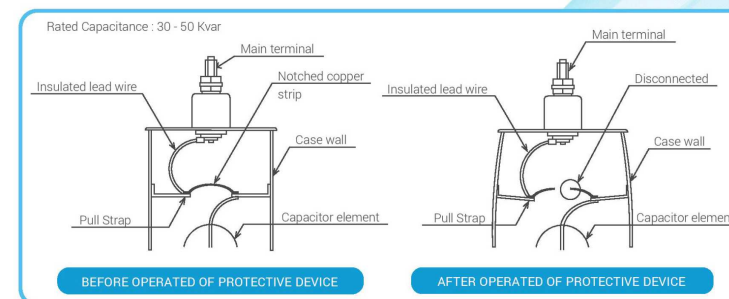
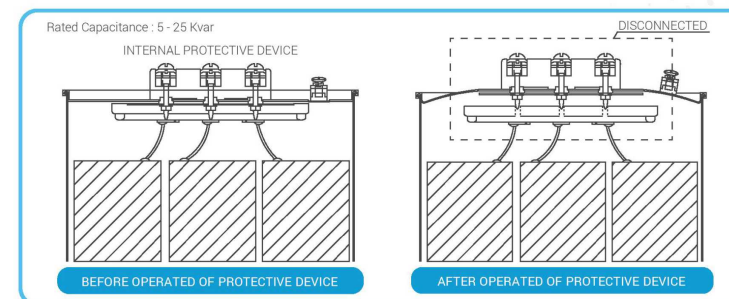
### MAXIMUM PERMISSIBLE VOLTAGES VS DURATION

VOLTAGE FACTOR (X rated voltage)	MAXIMUM DURATION
1.10	8 hours max. in every 24 hours
1.15	30 minutes max. in every 24 hours
1.20	5 minutes max. x 2 times max. in a month
1.30	1 minutes max. x 2 times in a month

## INTERNAL PROTECTIVE DEVICE

Should the internal pressure build-up resulting from continuous dielectric breakdown. In result, the sensitive pressure interrupter between the capacitor elements and terminal will, detach the capacitor from the electrical circuit.

### INTERNAL PROTECTIVE DEVICE : RF-T



## WARRANTY

Company warrants these capacitors against defects in materials and workmanship for One (1) full year from date of installation. Exception for capacitors on networks that are damage by harmonic, overvoltage, overcurrent and over ambient temperature refer to IEC No.60831-1

## NOTE

We reserve the right to alter or modify the information contained herein at any time in the light of technical or other developments.

We do not accept any responsibility for any misuse of the product and cannot be held liable for indirect or consequential damages.